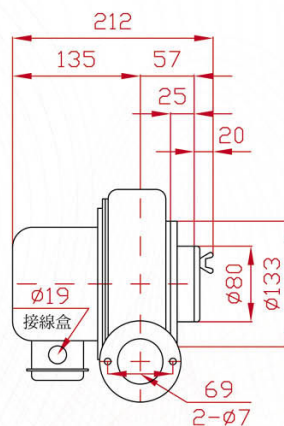
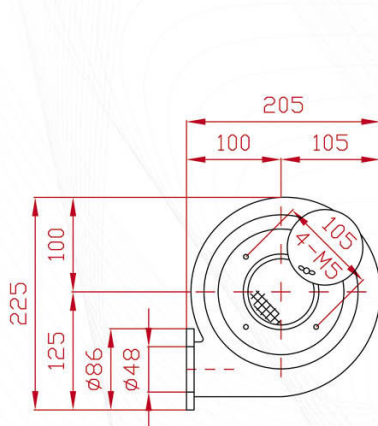


# BPF SERIES

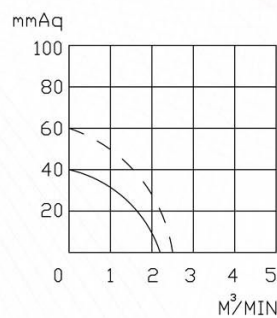
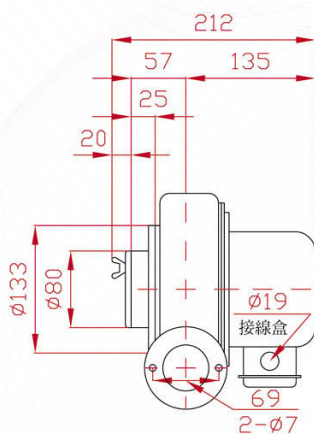
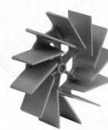
BLOTEK®

BLOTEK HIGH PERFORMANCE BLOWER

BPF-0050



BPF-0050L



50HZ ———  
60HZ - - - -

## SPECIFICATIONS

型號 TYPE	功率 KW	出口口徑 MM	電壓 V	頻率 HZ	回轉數 R.P.M.	靜壓 mmAq	最大風量 M³/MIN	噪音值 dB(A)	淨重 KG(N.W.)
BPF-0050	0.05	φ 48	請指定電壓，註一 (Note 1)	50	2800	40	2.2	50	4.3
BPF-0050L				60	3300	60	2.5	60	

說明 Instruction : L Type : 反向(Opposite direction)

註一：供應電壓如下：單相(1 Phase)—100, 110, 120, 200, 220, 230, 240V

(Note 1) 三相(3 Phase)—200, 208, 220, 230, 240, 346, 380, 400, 415, 440, 480, 575V

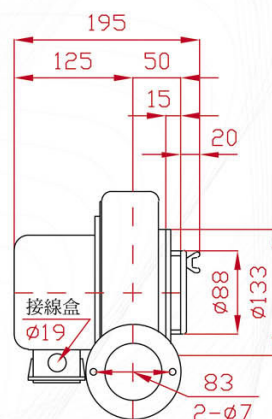
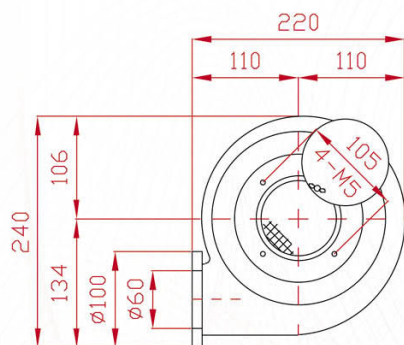
PS：訂購時請指定電壓與頻率。 When ordering, please specify voltage and frequency.

BLOTEK® 送排風機

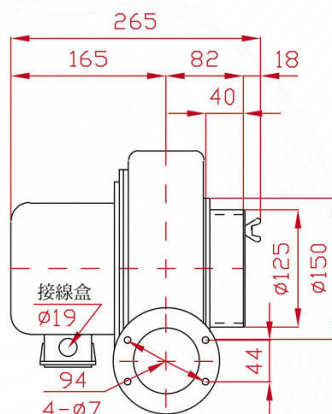
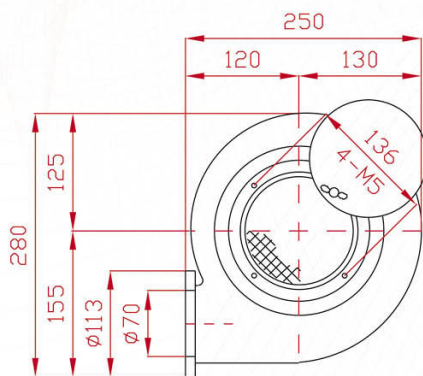
<http://www.blotek.com.tw>

# BPF SERIES

**BPF-0080**



**BPF-0100**



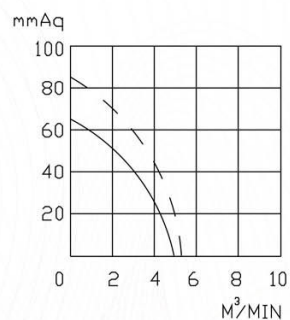
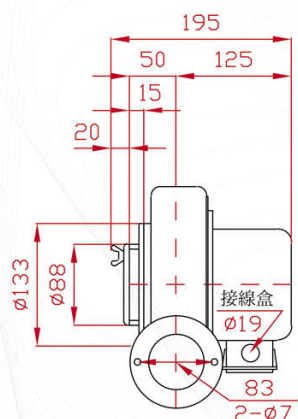
## SPECIFICATIONS

型號 TYPE	功率 KW	出口口徑 MM	電壓 V	頻率 HZ	回轉數 R.P.M.	靜壓 mmAq	最大風量 M <sup>3</sup> /MIN	噪音值 dB(A)	淨重 KG(N.W.)
BPF-0080	0.08	φ 60	請指定電壓，註一 (Note 1)	50	2800	65	4.9	60	4.4
BPF-0080L				60	3300	85	5.3	65	
BPF-0100	0.1	φ 70	請指定電壓，註一 (Note 1)	50	2800	70	5.5	65	6.2
BPF-0100L				60	3300	100	6.5	70	

說明 Instruction : L Type : 反向(Opposite direction)

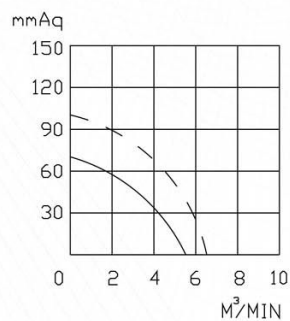
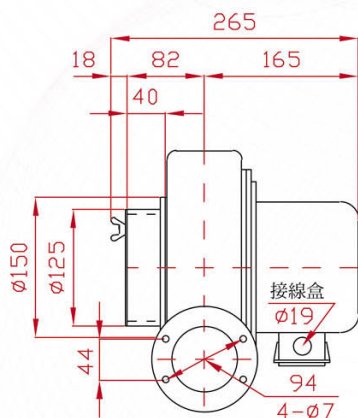


**BPF-0080L**



50HZ ———  
60HZ - - - -

**BPF-0100L**



50HZ ———  
60HZ - - - -

註一：供應電壓如下：單相(1 Phase)—100, 110, 120, 200, 220, 230, 240V  
(Note 1) 三相(3 Phase)—200, 208, 220, 230, 240, 346, 380, 400, 415, 440, 480, 575V

PS：訂購時請指定電壓與頻率。  
When ordering, please specify voltage and frequency.